



WALKTHRU™

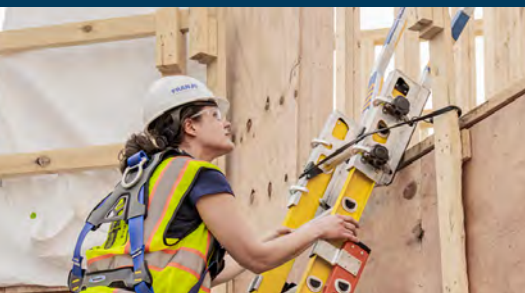
EXTENSION LADDER SAFETY ACCESSORY

STEP THROUGH SAFELY

- Built by Werner for Werner
- Stable, Easy to Use Dual Clamping System
- 25% Lighter than Competitor Model
- For Use on Type II, I, IA and IAA Ladders



TAKE YOUR EXTENSION LADDER TO NEW HEIGHTS



Designed to Fit Werner Products



Dual Clamping System

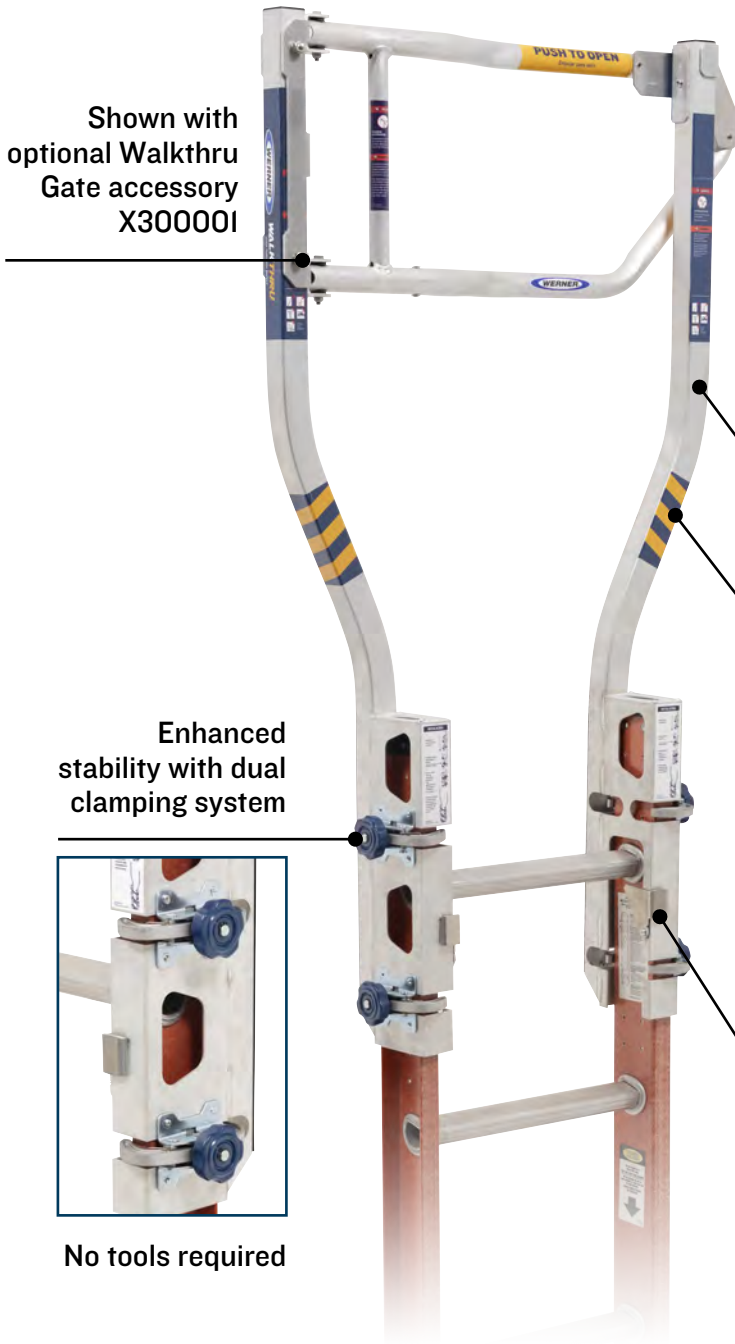


Accessory Gate Option



WALKTHRUTM

EXTENSION LADDER SAFETY ACCESSORY



- Provides ergonomic transition area from ladder to roof, eliminating the need to step around the ladder
- Wide base provides additional contact area on the worksurface making a safer transition to and from the access point
- Spring closed gate accessory also available
- Easy to install and uninstall

Brace arms are designed for optimal descending and handles positioned for best ergonomics

Violator markings for visibility

Meets Compliance Standards
OSHA 1910 & 1926

Ladder	Duty Rating	
Type IAA	Special Duty	375 lbs
Type IA	Extra Heavy Duty	300 lbs
Type I	Heavy Duty	250 lbs
Type II	Standard	225 lbs

Latch spring mechanism fits securely in place

SPECIFICATIONS



MODEL NO.	ITEM NAME	SHIPPING HEIGHT	SHIPPING LENGTH	SHIPPING WIDTH	SHIPPING WEIGHT	PRODUCT WEIGHT
X300000	Extension Ladder WalkThru	7.1 in	51 in	9.75 in	11 lbs.	10.5 lbs.
X300001	Extension Ladder WalkThru Gate	3.75 in	30.7 in	14.17 in	4 lbs.	4 lbs.